

Z-CAD® One4All Multi

The Flexible Colorful One

45% translucency combined with high flexural. Strength Adaption in CAD/CAM. For all anterior and posterior restorations.



Flexibility in the CAD/CAM jungle

Z-CAD® One4All Multi

Here the name stands for itself. This multi purpose biocompatible material fulfills highest esthetic requirements in the anterior and posterior regions for 1-16 unit restorations.

Stay flexibel, one disc offering all solutions. Crowns, partial crowns, veneers, inlays, onlays and bridges are indicated with this material. Bar constructions, supra structures and hybrid dentures, the choice is tremendous, to mill in one process.

Screw or cement retained, your restoration will fulfill all your needs. The finished Z-CAD® One4All material can be finally inserted in the mouth as monolithic or veneered restoration.

Optionally you can individualize the substructures with equivalent veneering materials. Alternatively, Zirconia press-ceramic can be utilized.

Z-CAD® One4All Multi

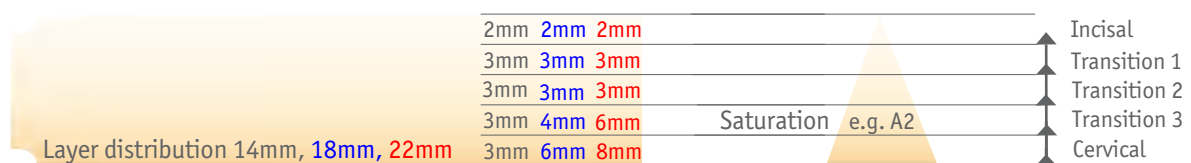
The Flexible Colorful One

Is a high-performance zirconia which meets the ISO 6872:2019 standard class 5, it is available in all 16 A1-D4 dentin colors, according to the *Vita classical A1-D4 color system. Typical strength of more than 1000 MPa (biaxial measurement). Translucency of 45%. The flexibel solution for daily business in the dental laboratory.



Z-CAD® One4All Multi

A homogeneous microstructure. The innovative filling strategy ensures a stepless gradient in the 16 Vita colors. Simple nesting by constant layering in all 3 disc sizes, from the incisal edge with 2mm height, in the following 2 transition layers, each with 3mm height. Greatest variety of indications. Can be combined with all individualization processes. One4All = One for all in 14, 18 and 22mm ** With a colorful flexibility in the CAD / CAM jungle.



*VITA classical A1 - D4® is a registered trademark of VITA Zahnfabrik H. Rauter GmbH & Co. KG in Bad Säckingen.

Metoxit Z-CAD® One4All Multi pre colored zirconia blanks

Art. No.	Product One4All A1 - A4	Geometry Ø 98,5mm**
411305	Z-CAD One4All Multi 98.5x14mm A1	
411307	Z-CAD One4All Multi 98.5x18mm A1	
411888	Z-CAD One4All Multi 98.5x22mm A1	
411312	Z-CAD One4All Multi 98.5x14mm A2	
411314	Z-CAD One4All Multi 98.5x18mm A2	
411890	Z-CAD One4All Multi 98.5x22mm A2	
411319	Z-CAD One4All Multi 98.5x14mm A3	
411321	Z-CAD One4All Multi 98.5x18mm A3	
411892	Z-CAD One4All Multi 98.5x22mm A3	
411326	Z-CAD One4All Multi 98.5x14mm A3.5	
411328	Z-CAD One4All Multi 98.5x18mm A3.5	
411894	Z-CAD One4All Multi 98.5x22mm A3.5	
411333	Z-CAD One4All Multi 98.5x14mm A4	
411335	Z-CAD One4All Multi 98.5x18mm A4	
411896	Z-CAD One4All Multi 98.5x22mm A4	

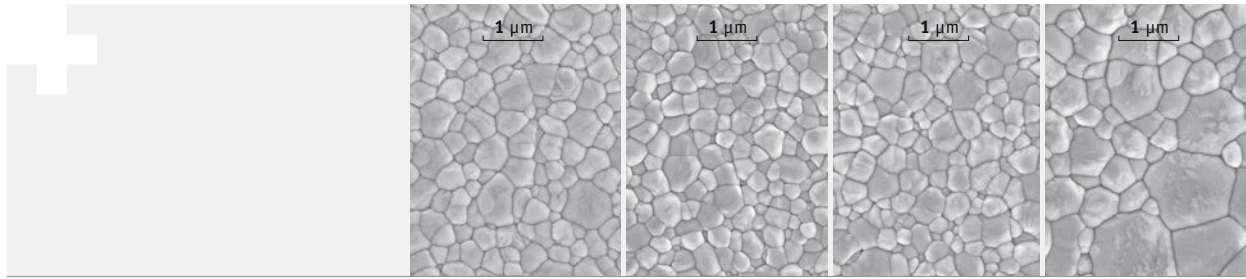
Art. No.	Product One4All C1 - C4	Geometry Ø 98,5mm**
411370	Z-CAD One4All Multi 98.5x14mm C1	
411372	Z-CAD One4All Multi 98.5x18mm C1	
411906	Z-CAD One4All Multi 98.5x22mm C1	
411377	Z-CAD One4All Multi 98.5x14mm C2	
411379	Z-CAD One4All Multi 98.5x18mm C2	
411908	Z-CAD One4All Multi 98.5x22mm C2	
411384	Z-CAD One4All Multi 98.5x14mm C3	
411386	Z-CAD One4All Multi 98.5x18mm C3	
411910	Z-CAD One4All Multi 98.5x22mm C3	
411391	Z-CAD One4All Multi 98.5x14mm C4	
411393	Z-CAD One4All Multi 98.5x18mm C4	
411912	Z-CAD One4All Multi 98.5x22mm C4	

Art. No.	Product One4All B1 - B4	Geometry Ø 98,5mm**
411340	Z-CAD One4All Multi 98.5x14mm B1	
411342	Z-CAD One4All Multi 98.5x18mm B1	
411898	Z-CAD One4All Multi 98.5x22mm B1	
411349	Z-CAD One4All Multi 98.5x14mm B2	
411351	Z-CAD One4All Multi 98.5x18mm B2	
411900	Z-CAD One4All Multi 98.5x22mm B2	
411356	Z-CAD One4All Multi 98.5x14mm B3	
411358	Z-CAD One4All Multi 98.5x18mm B3	
411902	Z-CAD One4All Multi 98.5x22mm B3	
411363	Z-CAD One4All Multi 98.5x14mm B4	
411365	Z-CAD One4All Multi 98.5x18mm B4	
411904	Z-CAD One4All Multi 98.5x22mm B4	

Art. No.	Product One4All D2 - D4	Geometry Ø 98,5mm**
411398	Z-CAD One4All Multi 98.5x14mm D2	
411400	Z-CAD One4All Multi 98.5x18mm D2	
411914	Z-CAD One4All Multi 98.5x22mm D2	
411405	Z-CAD One4All Multi 98.5x14mm D3	
411407	Z-CAD One4All Multi 98.5x18mm D3	
411916	Z-CAD One4All Multi 98.5x22mm D3	
411412	Z-CAD One4All Multi 98.5x14mm D4	
411414	Z-CAD One4All Multi 98.5x18mm D4	
411918	Z-CAD One4All Multi 98.5x22mm D4	

**Additional shapes and sizes
(e.g. cylindrical or Ø 95mm) on request

Z-CAD® Materials



	Units	Z-CAD® HD	Z-CAD® HTL	Z-CAD® One4All Multi	Z-CAD® smile
Chemical Composition					
ZrO ₂ + HfO ₂ + Y ₂ O ₃	wt%	> 99.5	> 99.5	> 99.5	> 99.5
Y ₂ O ₃	wt%	5.2	5.2	6.9	9.3
Al ₂ O ₃	wt%	0.25	0.05	0.05	0.05
Sum of all other oxides	wt%	≤ 0.5	≤ 0.5	≤ 0.5	≤ 0.5
Properties					
Density	g/cm ³	6.08	6.08	6.06	6.04
Bending strength (biaxial)	MPa	> 1100	> 1100	> 1000	> 610
Grain size	µm	< 0.4	< 0.4	< 0.5	< 0.6
Fracture Toughness K _{IC}	MPa√m	5	5	5	3.5
Hardness HV ₁₀	-	1250	1250	1250	1250
Translucency (1mm, D65)	%	35	41	45	49
Coefficient of thermal expansion (CTE)	10 ⁻⁶ /K	11.2	11.2	10.8	10.6
Thermal conductivity	W/mK	2.5	2.5	2.5	2.5
Solubility (acetic acid)	µg/cm ²	≤ 100	≤ 100	≤ 100	≤ 100
Radioactivity	Bq/kg	≤ 200	≤ 200	≤ 200	≤ 200
Indications					
		bar constructions, discoloration, abutments, frames...	bar constructions, Suprastructures, frames, bridges...	inlay, onlay, veneer, crowns, bridges...	inlay, onlay, veneer, crowns, 3-unit bridges...
Normative specification					
		dental restorations according to ISO 6872:2019 class 5	dental restorations according to ISO 6872:2019 class 5	dental restorations according to ISO 6872:2019 class 5	dental restorations according to ISO 6872:2019 class 4

All information and data correspond to the present state of our knowledge concerning properties and applications. For more specific product information, see our instructions for use. If you do not comply with the instructions for use no guarantee for the specified material properties is taken.